



Big Picture Landscape Design

With Heather Evans of Design Your Wild and
Zoe Evans of Wildr
www.designyourwild.com
www.plantitwild.com

Hosted by:



Last December Wild Ones national webinar featured mother Heather and daughter Zoe in the “Turn That Patch Into a Plan” workshop.

The concepts presented fill a missing piece in the native plant movement, creating human spaces among our wildness.

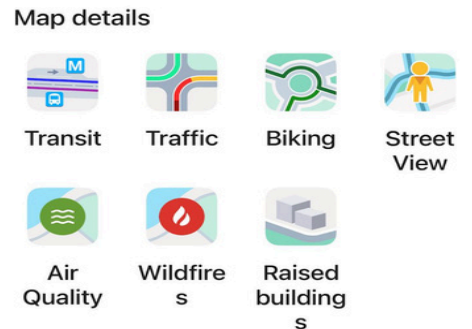
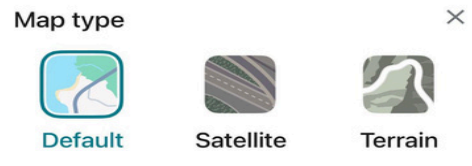
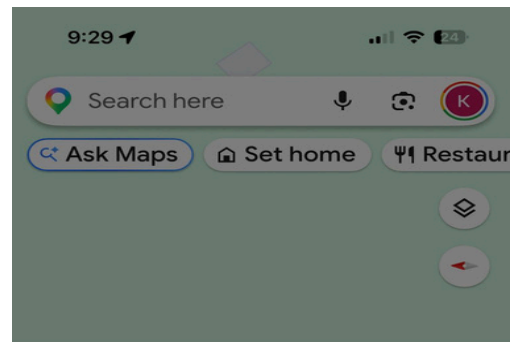
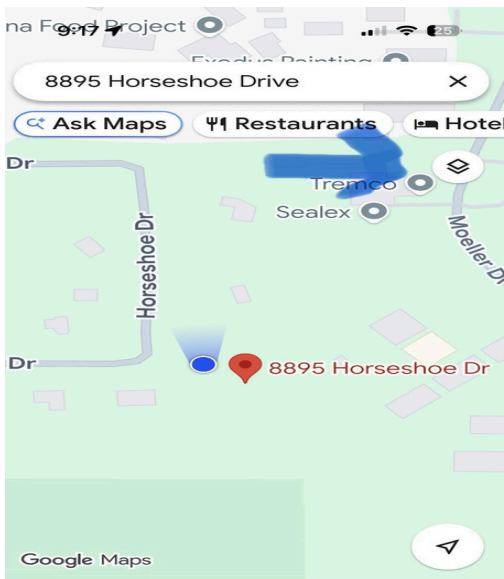
Today we will watch another one of their webinar workshops that present these concepts.

These workshops assume you have a photo of your yard created from online maps. We will start with creating photos of your yard. You can use Google Maps/Earth, Apple Maps, or County GIS maps.

County GIS maps have some other features I will touch on briefly.

Google Earth/Maps

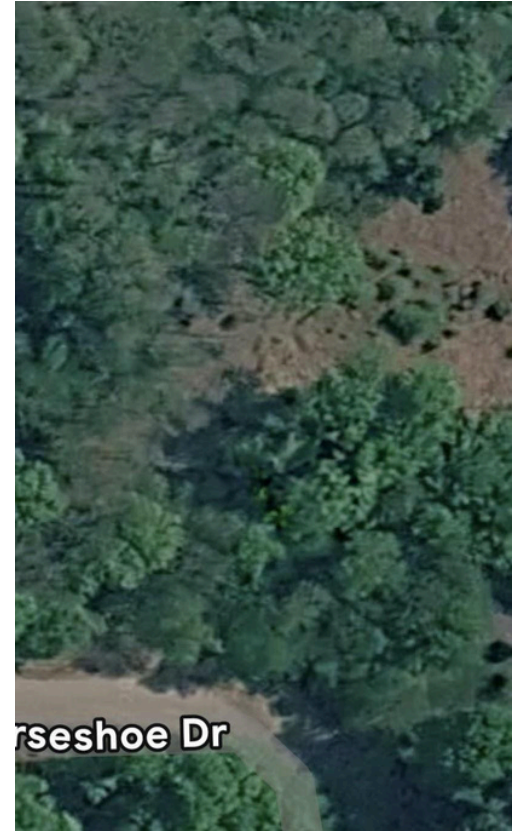
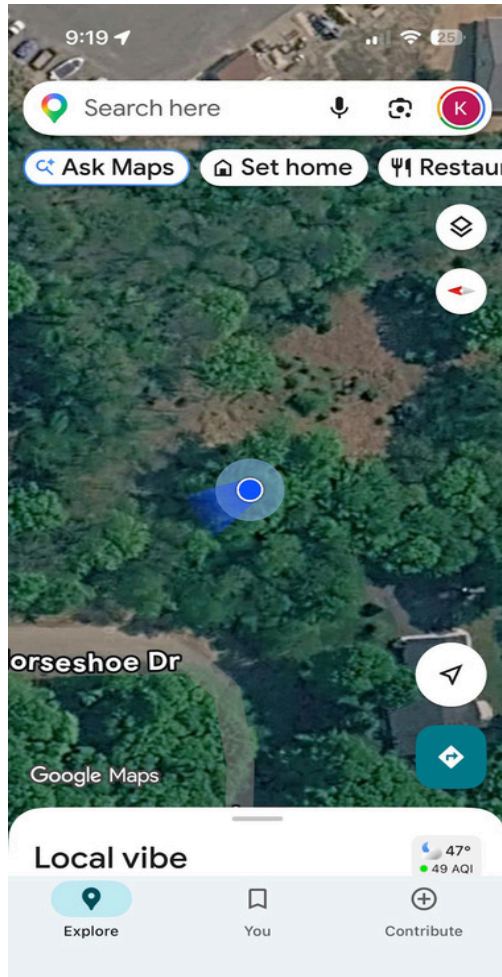
Turn on satellite settings after entering address (if necessary).



Google Earth/Maps

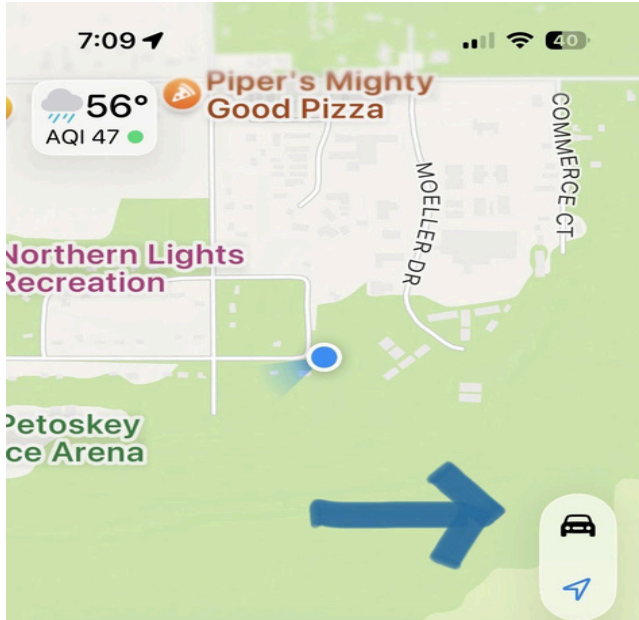
Take a screen shot of the map, making it a little bigger than your yard. You will use your photo app to crop the photo to your design area, eliminating parts of the photo you don't want.

Note: If you have a Google photos app or if your iPhone photo app has the “Clean Up” tool you can remove unwanted parts of the photo, such as map markers.



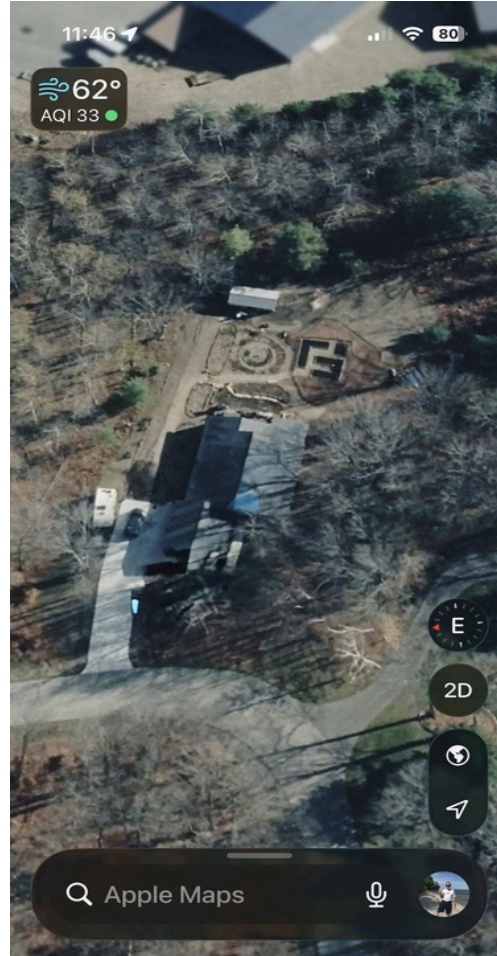
Apple Maps

Make sure you have the Satellite setting turned on. Turn off traffic and label.



Apple Maps

Move the picture around so you have a little bit more than just your yard. Take a screen shot of the map view and then use your photo app to crop the photo to include the design area.

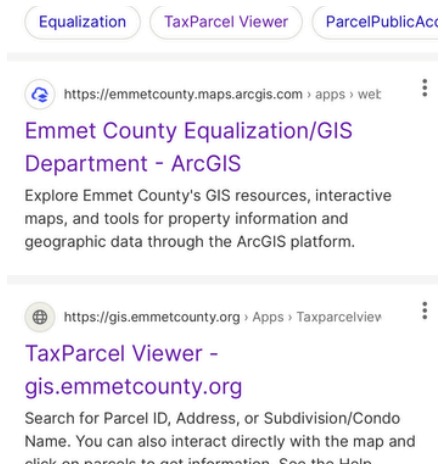
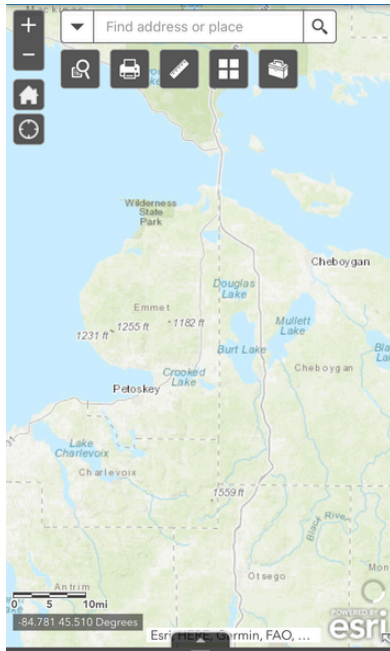


County Property Records (ArcGis)

Do a browser search for county property records =>

“Emmet County MI parcel arcgis”. The website will start with:

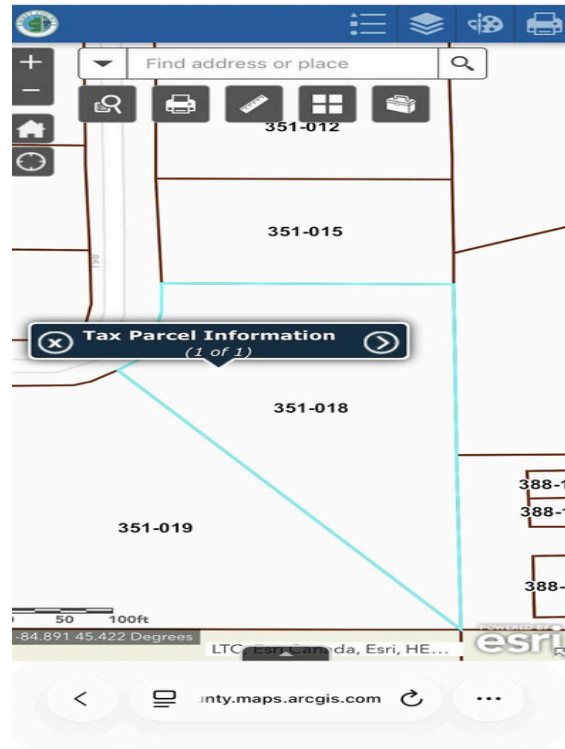
<https://emmetcounty.map.arcgis.com>



County Property Records (ArcGis)

After entering your address you will see a screen with your property outline.

This screen is the “Tax Parcel” layer.



County Property Records (ArcGis)

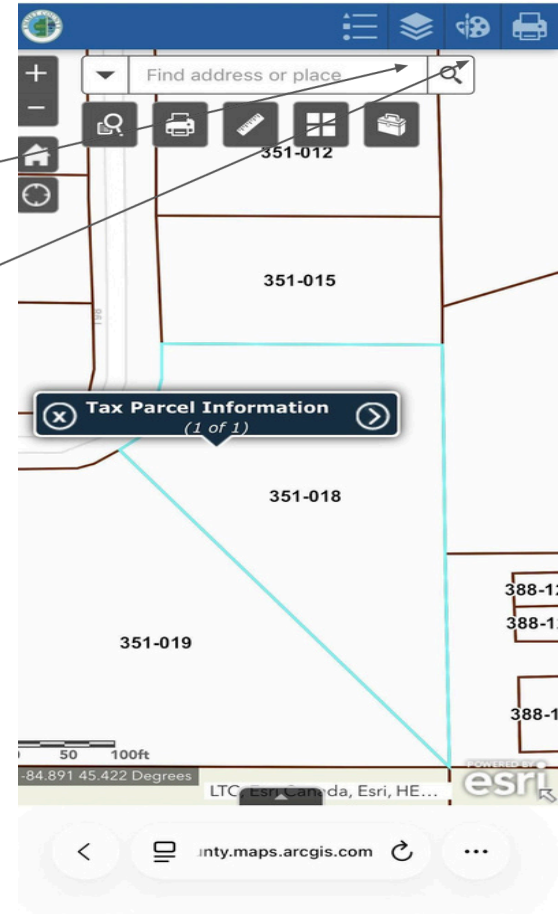
The ArcGIS website has several **tools** that can be used to develop a landscape layout. The following tools are located at the top of the screen.

Layer List

- Soils - shows property soil type
- Imagery (2025) - year specific photos

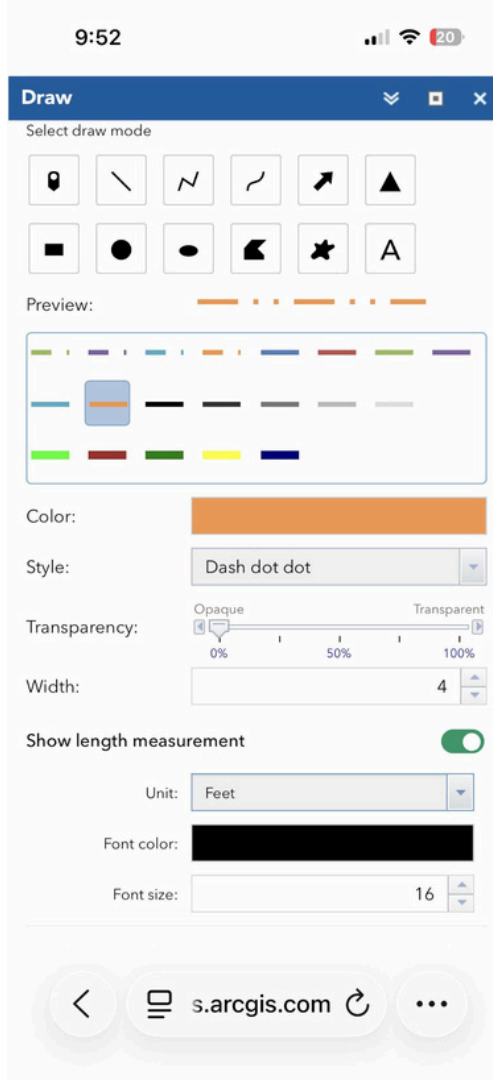
Draw Layer -

- Shapes and Lines - add shapes/lines to photo
- Measurements - for paper based designs



ArcGis Draw Layer with 2025 image

The Draw layer allows you to overlay different shapes/lines on the map. There is also an option to show line lengths.

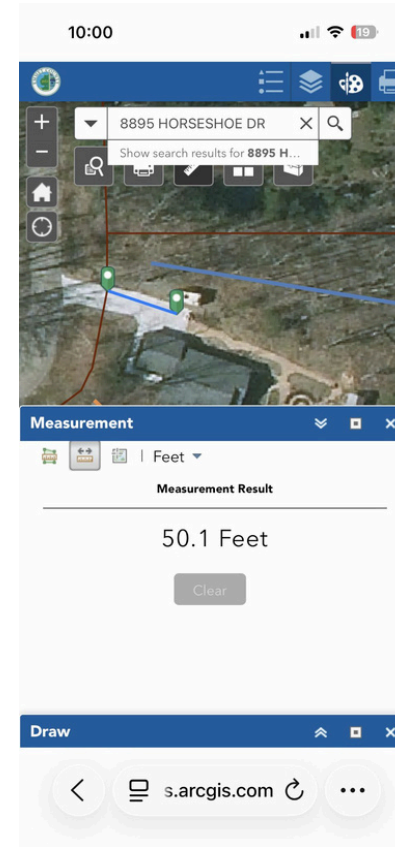


County Property Records (ArcGis)

Additional tools are located under the search bar.

Ruler - Get measurements between points.

Print - The print options create a PDF output but you don't have control over what is included (mine had neighboring houses on all sides).

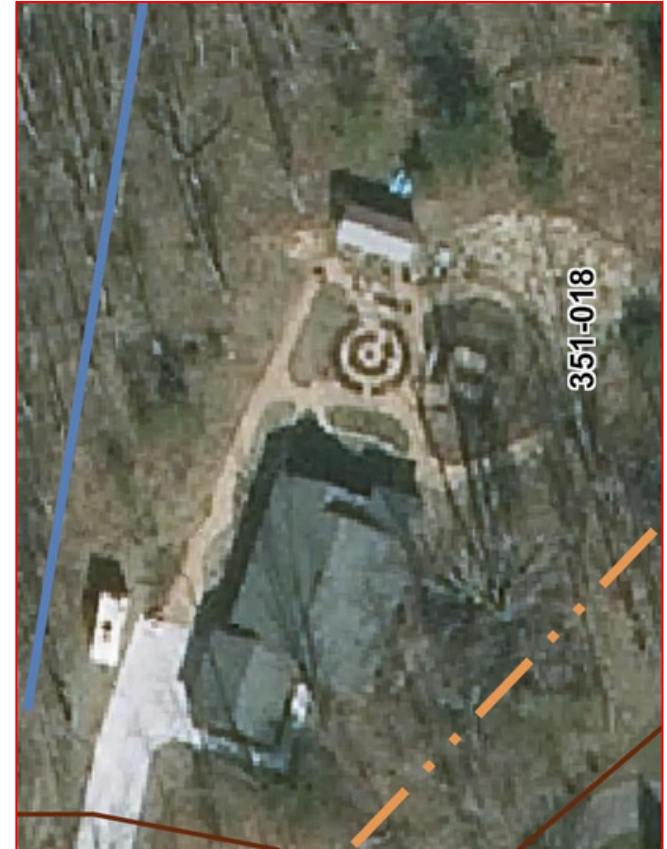
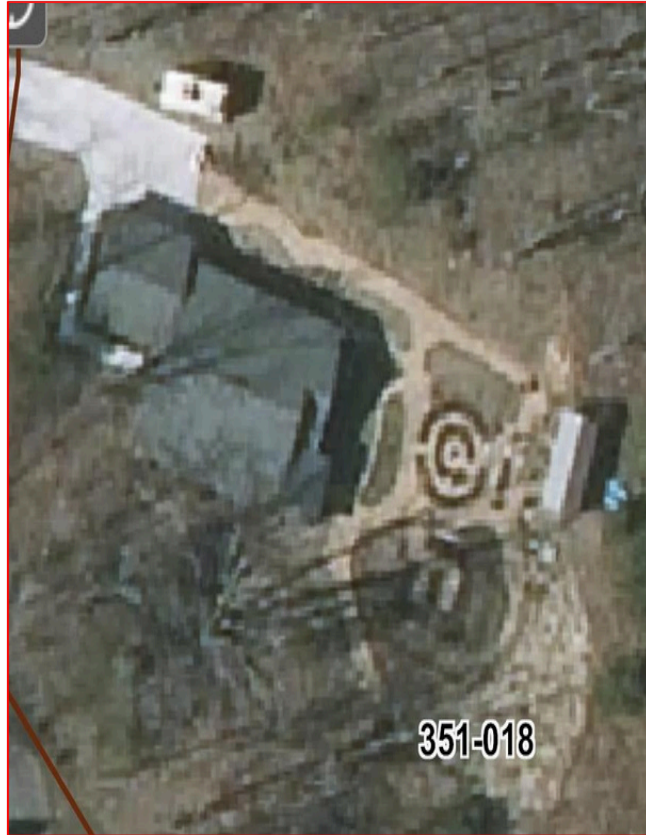


County Property Records (ArcGis)

Similar to other map options, a screen shot can be used to get a photo.

Any of the photos can be rotated for a different angle.

A benefit of the ArcGis can be the property lines.



Creating Landscape Layouts - Tools / DIY

- Utilizing online maps for landscape design (topic of webinar)
- Excel/Graph Paper - good for matrix designs of beds
- Websites/Apps?

Considerations for landscape design

- Lines/Paths (shapes => straight / curved, materials => grass, mulch, gravel, stone, widths => what needs to fit on the path / wheelbarrow, mower, etc)
- Bed Shapes (formal=geometric / curvy=naturalistic)
- Water Use (zone concept - keep things that need the most water; pots, vegetable garden, closer to house)
- Light (sun vs shade)
- Structural Elements (benches, pots, trellis)

Enjoy the Presentation!

This presentation was done with the Cornell Lab of Ornithology. We are starting around minute 8 which is when Heather and Zoe start presenting.

<https://www.youtube.com/watch?v=Er30sTUBJV4>
